

FLY ME TO THE MOON

1ST ALTO SAX

ARR. SAMMY NESTICO

MED. SWING

4

A

7

B

C

D

E

4

1ST ALTO SAX

FLY ME TO THE MOON

F (SOLO) Bmi9 E9 AMA7 F#7(b9)

Bmi9 E9 AMA7

G 4

OUT FOR VOCAL

FLY ME TO THE MOON

2ND ALTO SAX

ARR. SAMMY NESTICO

MED. SWING

4

A

7

B

C

mf

D

ff

E

mp

ff

Handwritten musical score for 2nd Alto Saxophone, page 2 of "Fly Me to the Moon". The score is written on a grand staff with a treble clef and a key signature of two sharps (F# and C#). The music is in 4/4 time. The score consists of several staves of music, including a key signature change to one sharp (F#) and back to two sharps. The notation includes various rhythmic values, slurs, and dynamic markings such as *mf* and *fp*. There are also handwritten annotations like "out" and "3" above notes. The score ends with a double bar line and a fermata over the final note.

Three empty musical staves, each consisting of five lines, provided for additional notation or practice.

FLY ME TO THE MOON

ARR. SAMMY NESTICO

1ST TENOR SAX

MED. SWING

3

A

B

C

D

E

mf

mf

ff

mf

ff

F

G

H

4e

ff

FLY ME TO THE MOON

2ND TENOR SAX

ARR. SAMMY NESTICO

MED. SWING

3

MELODY FIRST (C) mf

(B)

(C) mf

(D) ff

(E) mf ff

2ND TEN. SAX

FLY ME TO THE MOON

F

G

H CUT VOCAL

4e

ff

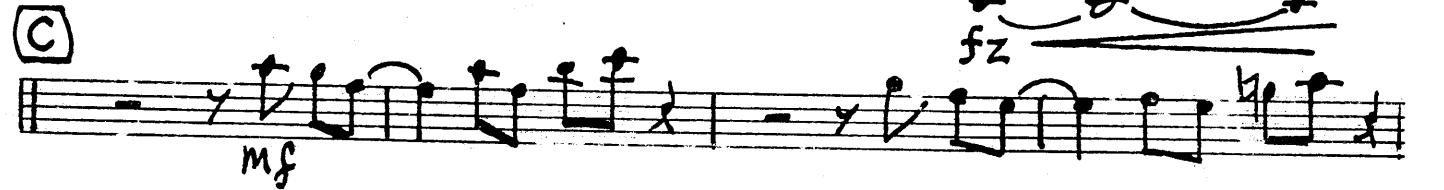
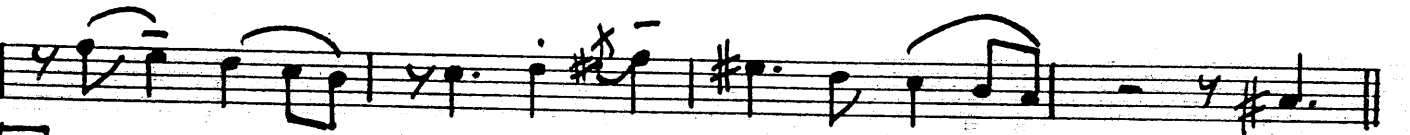
FLY ME TO THE MOON

BARI SAX

ARR. SAMMY NESTICO

MED. SWING

3



Handwritten musical score for Baritone Saxophone, page 2 of "Fly Me to the Moon". The score consists of six staves of music. The first staff is in treble clef with a key signature of two sharps (F# and C#). The second staff has a boxed "F" below it. The third staff has a boxed "G" below it. The fourth staff has a boxed "H" below it. The fifth staff has a circled "W" above it. The sixth staff has a circled "W" above it and a "fp" dynamic marking below it. The music includes various rhythmic patterns, slurs, and accents.

Three empty musical staves at the bottom of the page.

FLY ME TO THE MOON

1ST TRUMPET

ARR. SAMMY NESTICO

MED. SWING

4

(A)

8

(B)

2

mf

sf

(C)

mf

(D)

sf

2

sf

(E)

sf

(F)

1ST TRPT.

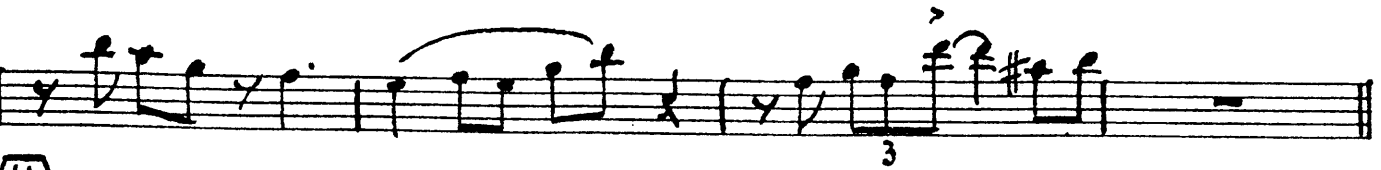
-2-

FLY ME TO THE MOON

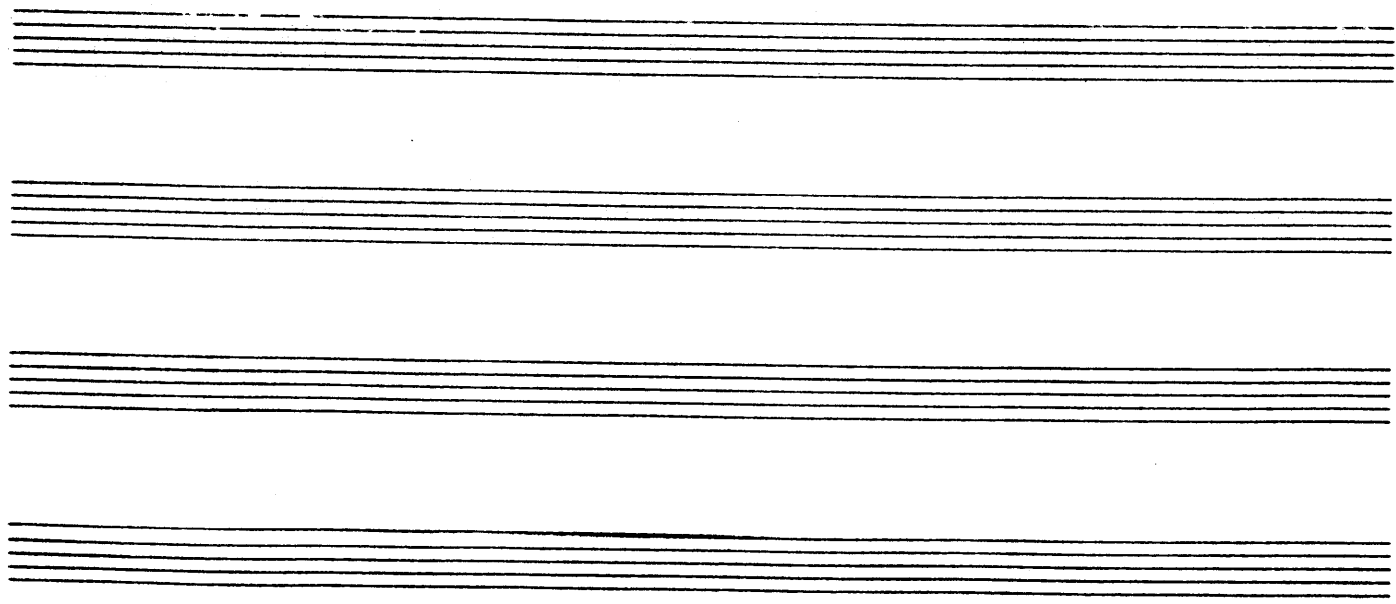
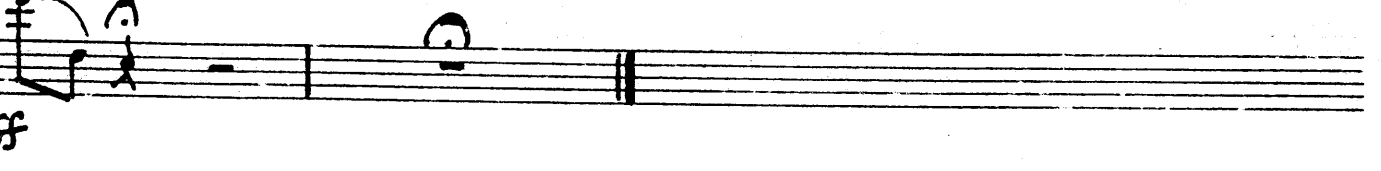
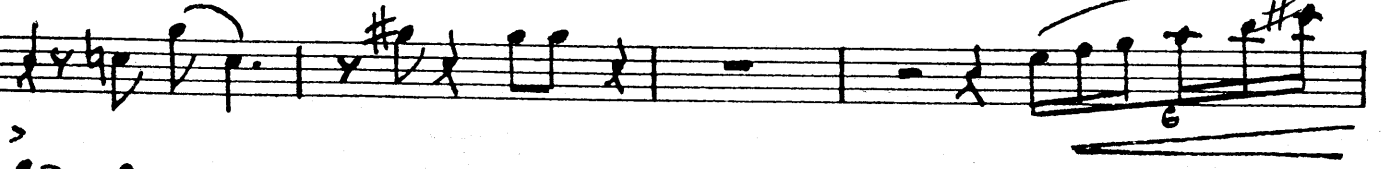
F 5



G 52



H 2



FLY ME TO THE MOON

2ND TRUMPET

ARR. SAMMY NESTICO

MED. SWING

4

(A) 8

(B) 2

(C)

(D)

2

(E)

2ND TRPT.

-2-

FLY ME TO THE MOON

F

5

ff

Detailed description: This staff begins with a treble clef and a key signature of one sharp (F#). It contains several measures of music. A large number '5' is written above the staff, indicating a fingering for a specific note. The notes are mostly quarter and eighth notes, some with slurs and accents. The dynamic marking 'ff' (fortissimo) is written below the staff.

G

Detailed description: This staff continues the musical piece with a treble clef. It features a series of eighth notes with slurs, followed by quarter notes. There are accents and slurs over the notes. The dynamic marking 'ff' is present.

3

Detailed description: This staff continues the melody with eighth and quarter notes. A '3' is written below the staff, indicating a triplet. The notes are slurred together.

H

2

3

Detailed description: This staff begins with a treble clef and a key signature of one sharp. A large number '2' is written above the staff. The music consists of quarter and eighth notes. A '3' is written below the staff, indicating a triplet. The dynamic marking 'ff' is present.

Detailed description: This staff continues the musical piece with eighth and quarter notes, many of which are slurred together. The dynamic marking 'ff' is present.

6

Detailed description: This staff continues the melody with quarter and eighth notes. A large number '6' is written above the staff, indicating a fingering. The notes are slurred together. The dynamic marking 'ff' is present.

ff

Detailed description: This staff concludes the piece with a few final notes, including a half note and a quarter note, slurred together. The dynamic marking 'ff' is present.

Detailed description: Four empty musical staves are provided at the bottom of the page, likely for additional notation or practice.

FLY ME TO THE MOON

3RD TRUMPET

ARR. SAMMY NESTICO

MED. SWING

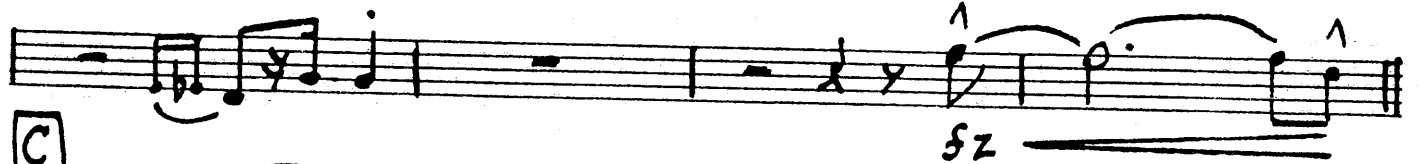
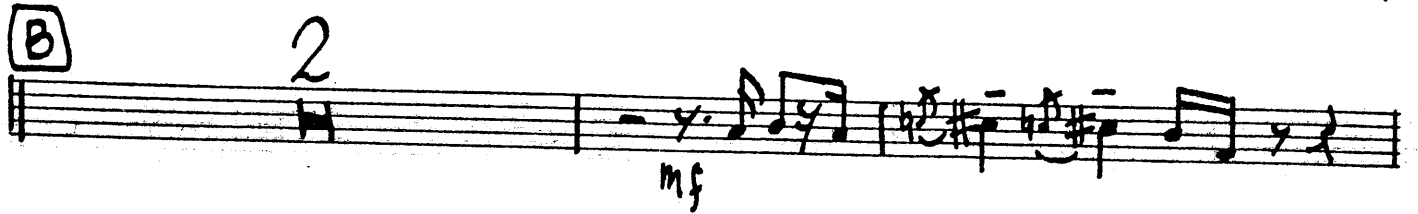
4



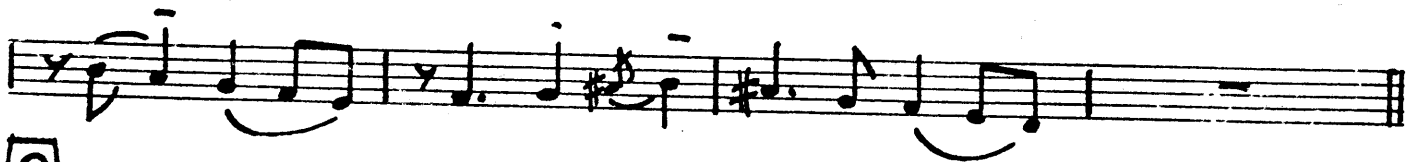
(A) 8



(B) 2



(C)



(D)



2



(E)



3RD TRPT.

-2

FLY ME TO THE MOON

F

Musical staff with notes and a '5' fingering mark above the staff.

G

Musical staff with notes and a '5 2' fingering mark below the staff.

Musical staff with notes and a '3' fingering mark below the staff.

H

Musical staff with notes and a '2' fingering mark above the staff.

Musical staff with notes and a '3' fingering mark below the staff.

Musical staff with notes and a '6' fingering mark above the staff.

Musical staff with notes and a double bar line.

Empty musical staff.

Empty musical staff.

Empty musical staff.

Empty musical staff.

FLY ME TO THE MOON

4TH TRUMPET

ARR. SAMMY NESTICO

MED. SWING

4

(A)

8

(B)

2

mf

5Z

(C)

mf

(D)

ff

2

ff

(E)

4TH TRPT.

FLY ME TO THE MOON

Handwritten musical score for the 4th Trumpet part of the song "Fly Me to the Moon". The score is written on a grand staff with a treble clef and a key signature of one sharp (F#). The music is divided into measures by vertical bar lines. The first measure is marked with a boxed 'F' and a '5' above it. The second measure is marked with a boxed 'G'. The third measure is marked with a boxed 'H' and a '2' above it. The score includes various musical notations such as eighth notes, quarter notes, and half notes, along with slurs, accents, and dynamic markings like 'fz'. There are also some handwritten annotations, including a circled group of notes in the third measure and a '3' above a triplet in the fourth measure. The score ends with a double bar line and a fermata over the final note.

Four empty musical staves, each consisting of five horizontal lines, arranged vertically. These staves are provided for additional notation or practice.

FLY ME TO THE MOON

1ST TROMBONE

ARR. SAMMY NESTICO

MED. SWING

(1/2 PLUNGER)

3

A *mf*

B

C *mf*

D (OPEN) *ff*

E *ff*

F

G

H

ff

FLY ME TO THE MOON

2ND TROMBONE

MED. SWING

ARR. SAMMY NESTICO

3 (1/2 PLUNGER)

A *mf*

B

C *mf*

D (OPEN) *ff*

E *mp* *ff*

2ND TRBN.

FLY ME TO THE MOON

Handwritten musical score for 2nd Trumpet. The score consists of ten staves of music. The first staff begins with a treble clef and a key signature of one sharp (F#). The second staff is marked with a circled 'F' and contains a whole note chord. The third staff is marked with a circled 'G' and contains a whole note chord. The fourth staff is marked with a circled 'H' and contains a whole note chord. The fifth staff contains a complex melodic line with many sixteenth notes and slurs. The sixth staff contains a complex melodic line with many sixteenth notes and slurs. The seventh staff contains a complex melodic line with many sixteenth notes and slurs. The eighth staff contains a complex melodic line with many sixteenth notes and slurs. The ninth staff contains a complex melodic line with many sixteenth notes and slurs. The tenth staff contains a complex melodic line with many sixteenth notes and slurs. The score includes various musical notations such as slurs, accents, and dynamic markings like 'fp'.

Two empty musical staves at the bottom of the page, consisting of five lines each.

FLY ME TO THE MOON

3RD TROMBONE
MED. SWING

ARR. SAMMY NESTICO

3

(1/2 PLUNGER)

A *mf*

B

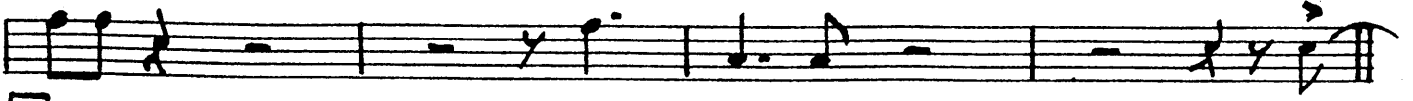
C *mf*

D (OPEN) *f*

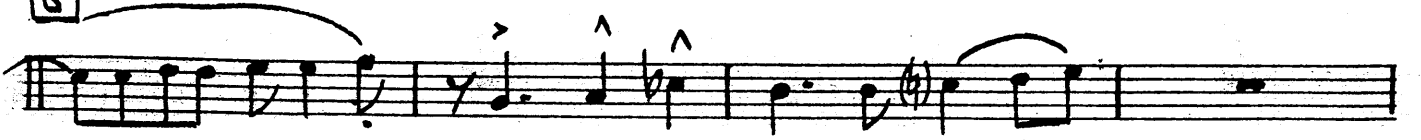
E *mf* *f*



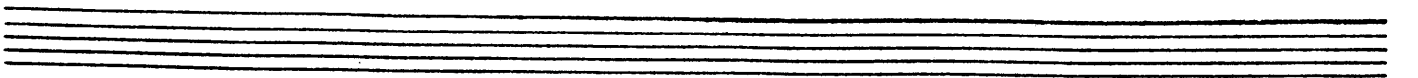
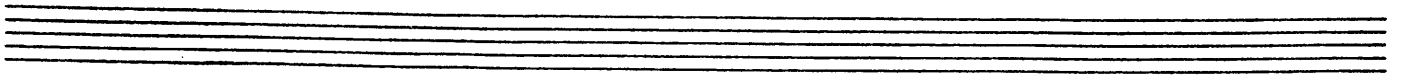
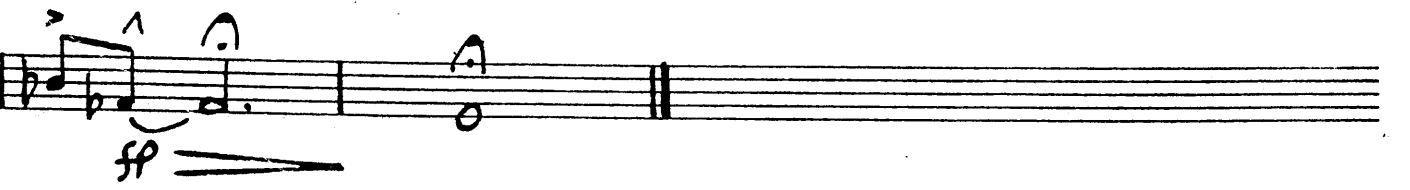
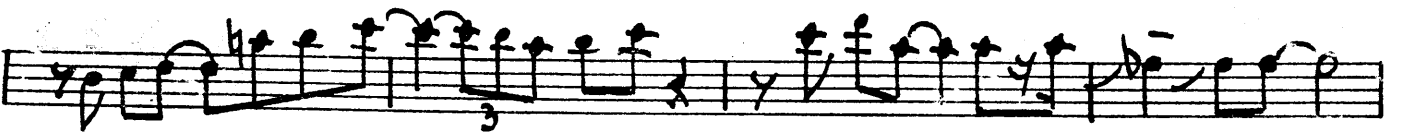
F



G



H



FLY ME TO THE MOON

4TH TROMBONE

ARR. SAMMY NESTICO

MED. SWING

3

(1/2 PLUNGER)

4/4 time signature, bass clef. Triplet of eighth notes. *mf*

A

mf

mf

B

mf

mf

C

mf

mf

D

ff

E

mf *ff*

ff

This image shows a handwritten musical score for the 4th Trumpet part of the song "Fly Me to the Moon". The score is written on a series of staves, with some sections marked with circled letters F, G, and H. The notation includes various musical symbols such as notes, rests, slurs, and dynamic markings like *ff*. The key signature has one flat (B-flat), and the time signature is 4/4. The score concludes with a double bar line and a final chord.

F

G

H

ff

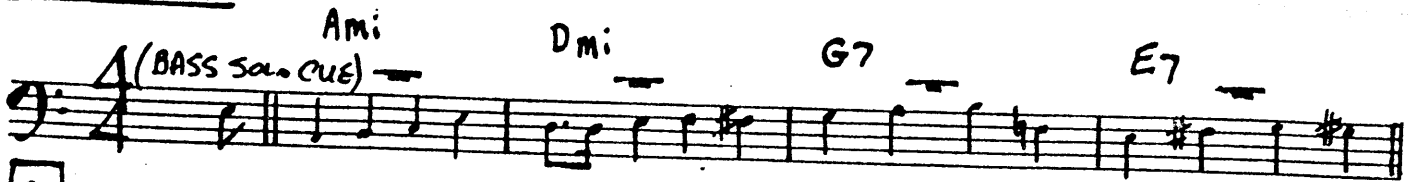
FLY ME TO THE MOON

PIANO

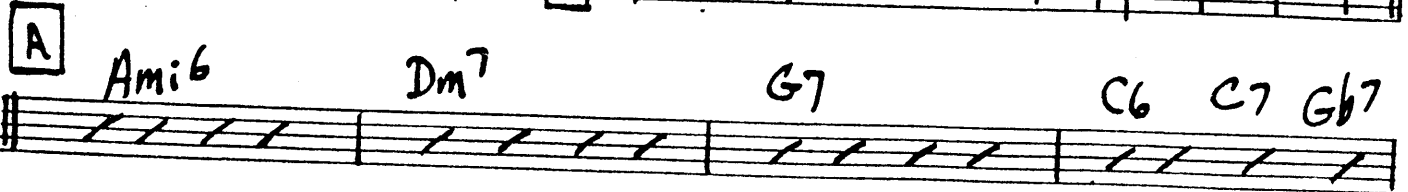
ARR. SAMMY NESTICO

MED. SWING

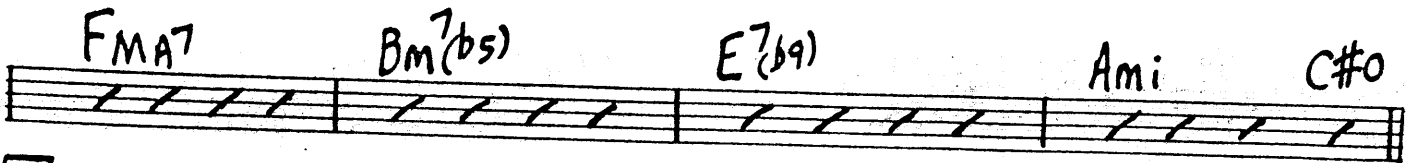
Ami (BASS SOLO CUE) Dmi G7 E7



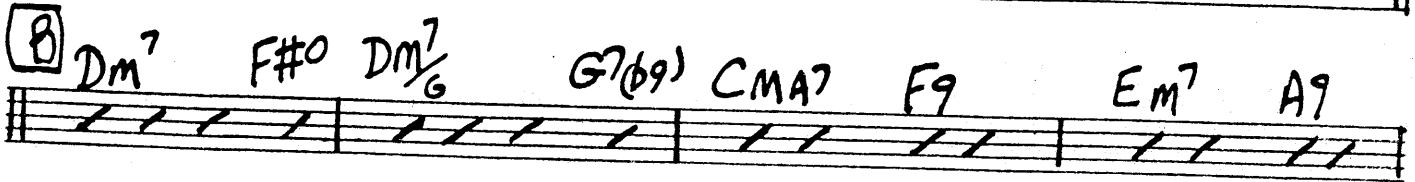
A Ami^b Dm⁷ G7 C6 C7 G^b7



FMA⁷ Bm⁷(b5) E⁷(b9) Ami C#0



B Dm⁷ F#0 Dm⁷/_G G⁷(b9) CMA⁷ F9 Em⁷ A9



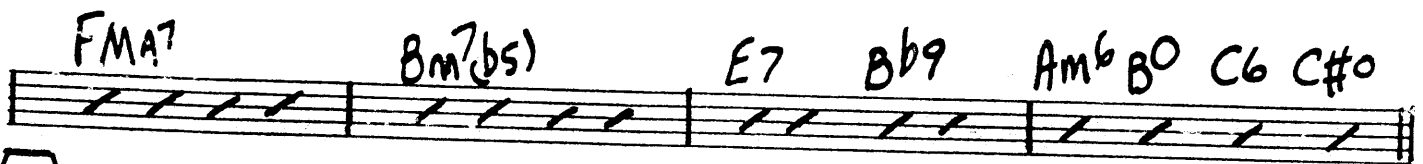
Dm⁷ Dm⁷/_G G9 CMA⁷ E⁷(b9)



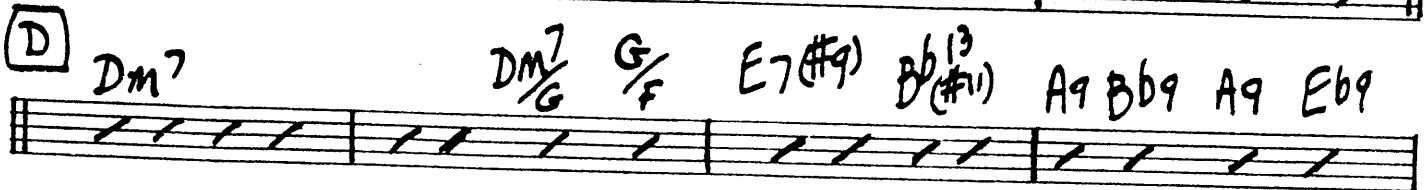
C Ami Dm⁷ G9 CMA⁷ C7 G^b7(b5)



FMA⁷ Bm⁷(b5) E7 B^b9 Am^b B⁰ C6 C#0



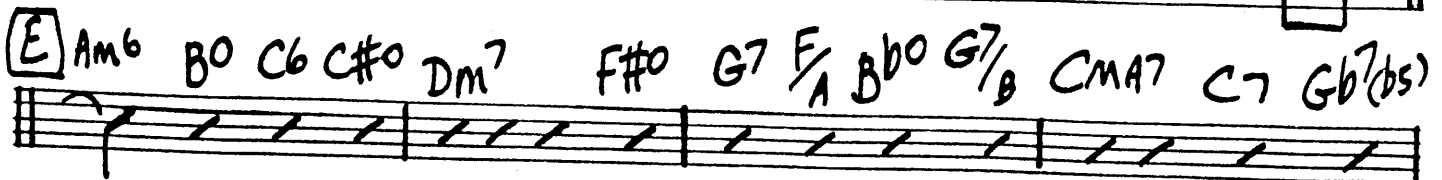
D Dm⁷ Dm⁷/_G G⁶/_F E⁷(#9) B^b(#11) A9 B^b9 A9 E^b9



Dm⁷ A^b9 Dm⁷/_G Fm⁶/_G C6⁹ Bm⁷ E⁷(b9) Am^b

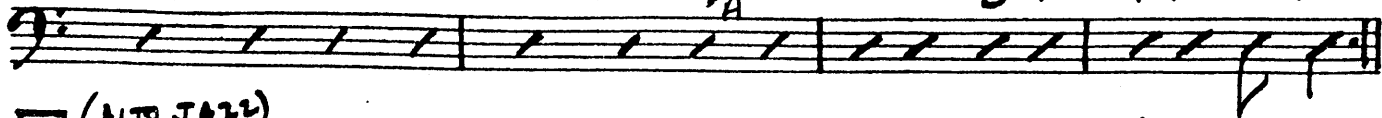


E Am^b B⁰ C6 C#0 Dm⁷ F#0 G7 F_A B⁰ G⁷/_B CMA⁷ C7 G^b7(b5)



PIANO

FMA7 Em7 Dm7 Cm7 Bm7bs Bb9 Dm13/A E7(b9) Bb9 Am6 A7(b9) (13)

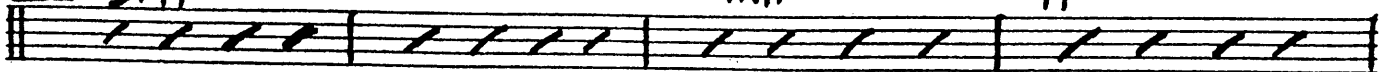


F (ALTO JAZZ)
Dm9

G13

CMA7

A7(b9)



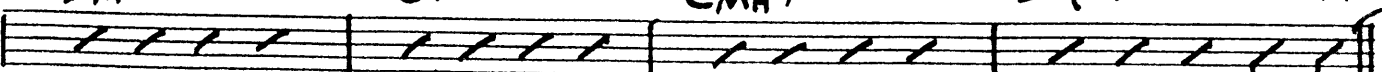
Dm9

G13

CMA7

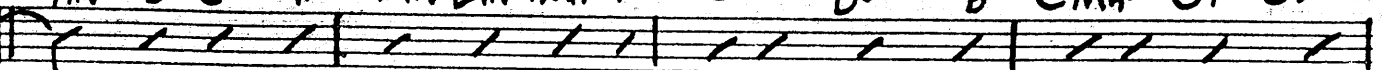
E7(b9)

Am6

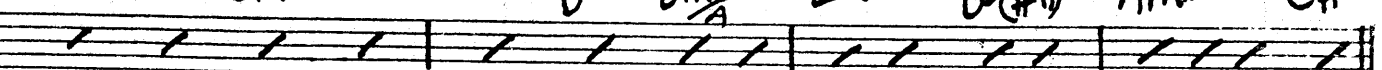


G (ENX.)

Am6 Bb C6 C#0 Dm7 Em7 FMA7 F#0 G7 Bb0 G7/B CMA7 C7 Gb7(b9)



FMA7 Em7 Dm7 CMA7 Bm7bs Bb9 Dm13/A E7(b9) Bb13(#11) Am6 C#0



H

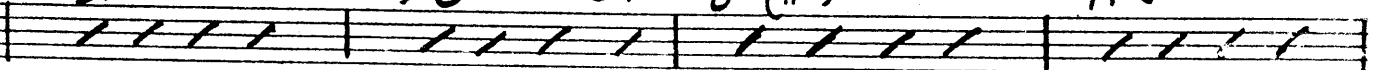
Dm9

Dm7/G

G7

Bb13(#11)

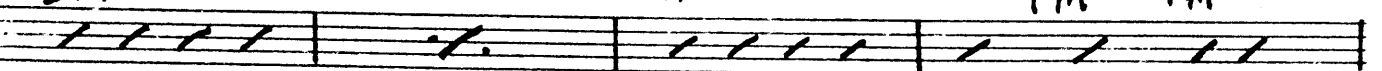
A7(#9)



Dm9

Fm: (MA7)

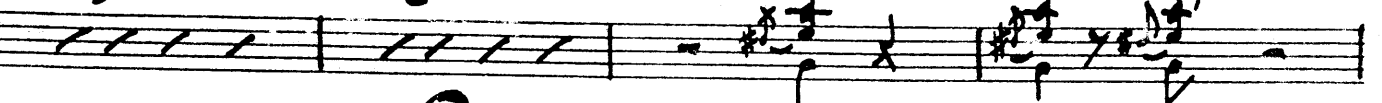
Fm7 Fm6



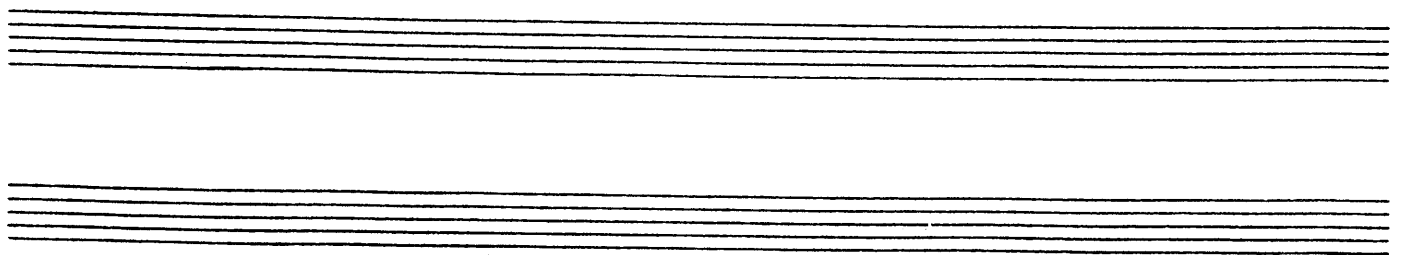
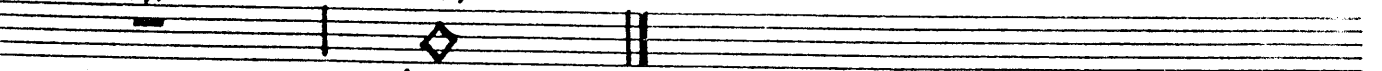
Bb/D

C0/G

(PIANO SOLO)



CMA7



FLY ME TO THE MOON

BASS

ARR. SAMMY NESTICO

MED. SWING

(SOLO)



A Am⁶ Dm⁷ G⁷ C C⁷ Gb⁷

FMA⁷ Bm⁷(bs) E⁷ Ami C#⁰

B Dm⁷ F#⁰ Dm⁷/G G⁷ CMA⁷ F⁹ Em⁷ A⁹

Dm⁷ Dm⁷/G G⁹ CMA⁷ E⁷ F

C Ami Dm⁷ G⁹ CMA⁷ C⁷ Gb⁷

FMA⁷ Bm⁷(bs) E⁷ Bb⁹ (b) #

D Dm⁷ Dm⁷ E⁷ Bb⁹

Dm⁷ Ab⁷ Dm⁷/G Fm⁶/G C⁶ Bm⁷ E⁷ Ami

E Dm⁷ F#⁰ G⁷ F/A Bb⁰ G⁷/B C C⁷ Gb⁷

BASS

FLY ME TO THE MOON

FMA7 Em7 Dm7 C-Bm7 Bb9 Dm6/A E7 Bb9 Ami A7+9

(F) (Alto)
Dm9 G9 CMA7 A7

Dmi9 G9 CMA7 E7

(G)

F Em7 Dm7 C Bm7 Bb9 Dm6/A E7 Bb9

(H) Dm9 Dm7/G G7 Bb9 A7

Dm9 Fmi Fm6

(PIANO)

FLY ME TO THE MOON

DRUMS

ARR. SAMMY NESTICO

MED. SWING

(STICK ON CLOSED HI HAT)

Drum notation for the first staff. It features a bass solo section with a 'y' symbol above the first measure and '(BASS SOLO)' written below. Above the staff, there are rhythmic markings: 'x' for snare and 'k' for hi-hat. The notation includes a double bar line and a repeat sign.

(A) (SOFT DRIVE)

First staff of section A, showing a bass line with a '4' above the final measure.

Second staff of section A, showing a bass line with an '8' above the final measure.

(B)

First staff of section B, showing a bass line with a '4' above the final measure.

Second staff of section B, showing a bass line with a '6' above the first measure and an 'EXPLODE' marking above the final measure.

(C)

First staff of section C, showing a bass line with 'mf' below the first measure and a '4' above the final measure.

Second staff of section C, showing a bass line with an '8' above the final measure.

(D)

First staff of section D, showing a bass line with accents (^) above the final two measures.

Second staff of section D, showing a drum line with 'Fill' and '(+ TOMS)' markings above, and triplets of 'x' for snare and 'k' for hi-hat.

(E)

First staff of section E, showing a bass line.

Second staff of section E, showing a drum line with a 'Fill' marking above.

Musical staff with notes and rests. A circled 'Fill' annotation is above the staff. A dynamic marking '>' is above the final note.

(F) (ALTO SOLO)

Musical staff with notes and rests. A circled '4' annotation is above the staff.

Musical staff with notes and rests. A circled '2' annotation is above the staff.

(G)

Musical staff with notes and rests. A circled 'Fill' annotation is above the staff.

Musical staff with notes and rests. A circled '6' annotation is above the staff. A circled '(SAX'S) 8' annotation is above the staff.

(H)

Musical staff with notes and rests. A circled '3' annotation is above the staff. A circled '3' annotation is below the staff.

(HEAVY BACK BEAT)

Musical staff with notes and rests. A circled '4' annotation is above the staff.

Musical staff with notes and rests. A circled '6' annotation is above the staff. A circled 'CLOSED HI-HAT' annotation is above the staff. A circled 'BIG CYM' annotation is above the staff.

Musical staff with notes and rests.

Empty musical staff.

Empty musical staff.

GUITAR

FLY ME TO THE MOON

ARR. SAMMY NESTICO

MED. SWING

1 (BASS solo cue)

Ami Dmi G7 E7

A Ami⁶ Dm⁷ G7 C6 C7 Gb⁷

FMA⁷ Bm⁷(b5) E⁷(b9) Ami C#0

B Dm⁷ F#0 Dm⁷/_G G⁷(b9) CMA⁷ F9 Em⁷ A9

Dm⁷ Dm⁷/_G G9 CMA⁷ E⁷(b9)

C Ami Dm⁷ G9 CMA⁷ C7 Gb⁷(b5)

FMA⁷ Bm⁷(b5) E7 Bb9 Am⁶ B0 C6 C#0

D Dm⁷ Dm⁷/_G G/_F E⁷(#9) Bb¹³(#11) A9 Bb9 A9 Eb9

Dm⁷ Ab9 Dm⁷/_G Fm⁶/_G C6₉ Bm⁷ E⁷(b9) Am⁶

E Am⁶ B0 C6 C#0 Dm⁷ F#0 G7 F/A Bb0 G⁷/_B CMA⁷ C7 Gb⁷(b5)

PIANO

FLY ME TO THE MOON

FMA7 EM7 DM7 CM7 Bm7b5 Bb9 DMi6/A E7(b9) Bb9 Am6 A7(b9)

Musical staff with rhythmic notation (slashes) for the first system.

F (ALTO JAZZ) DM9

G13

CMA7

A7(b9)

Musical staff with rhythmic notation for the second system.

DM9

G13

CMA7

E7(b9)

Am6

Musical staff with rhythmic notation for the third system.

G (ENX.)

Am6 Bb C6 C#0 DM7 EM7 FMA7 F#0 G7 Bb0 G7/B CMA7 C7 Gb7(b5)

Musical staff with rhythmic notation for the fourth system.

FMA7 EM7 DM7 CMA7 Bm7b5 Bb9 DMi6/A E7(b9) Bb13(#11) Am6 C#0

Musical staff with rhythmic notation for the fifth system.

H DM9

DM7/G

G7

Bb13(#11)

A7(#9)

Musical staff with rhythmic notation for the sixth system.

DM9

Fm(MA7)

Fm7 Fm6

Musical staff with rhythmic notation for the seventh system.

Bb/b

C0/G

(PIANO SOLO)

Musical staff with actual notes and rests for the eighth system.

CMA7

Musical staff with rhythmic notation for the ninth system.

Empty musical staff.

Empty musical staff.